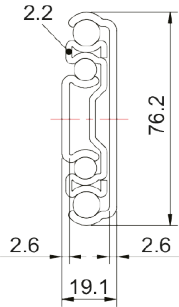




BALL BEARING SLIDES 76SC121

Version V16.1

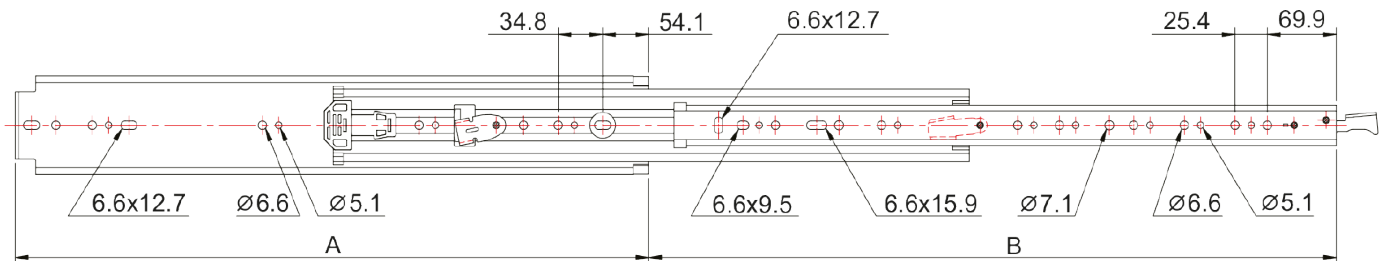


Basic Type

- Side mounted
- Full extension
- 32mm hole-system
- Non handed
- Lever Disconnect
- Material: Steel
- Finish: ZP
- Length: 356 - 1524mm
- Load: 30 000 cycles at 450mm length and load 250kg

Options

- Bayonets
- Brackets
- Customized hole patterns
- Customized length
- RoHS compliant
- Lockable in and out



Item No.	Slide Length A		Slide Travel B	
	inch	mm	inch	mm
76SC 121- 356	14"	356	14"	356
76SC 121- 406	16"	406	16"	406
76SC 121- 457	18"	457	18"	457
76SC 121- 508	20"	508	20"	508
76SC 121- 559	22"	559	22"	559
76SC 121- 610	24"	610	24"	610
76SC 121- 660	26"	660	26"	660
76SC 121- 711	28"	711	28"	711
76SC 121- 762	30"	762	30"	762
76SC 121- 813	32"	813	32"	813
76SC 121- 864	34"	864	34"	864
76SC 121- 914	36"	914	36"	914
76SC 121- 965	38"	965	38"	965
76SC 121- 1016	40"	1016	40"	1016
76SC 121- 1067	42"	1067	42"	1067
76SC 121- 1118	44"	1118	44"	1118
76SC 121- 1168	46"	1168	46"	1168
76SC 121- 1219	48"	1219	48"	1219
76SC 121- 1270	50"	1270	50"	1270
76SC 121- 1321	52"	1321	52"	1321
76SC 121- 1372	54"	1372	54"	1372
76SC 121- 1422	56"	1422	56"	1422
76SC 121- 1473	58"	1473	58"	1473
76SC 121- 1524	60"	1524	60"	1524