



BALL BEARING SLIDES HGS26 FULL EXTENSION - STAINLESS STEEL

Version V16.1

HEGRA *LinearEvolution*
ROLLON GROUP



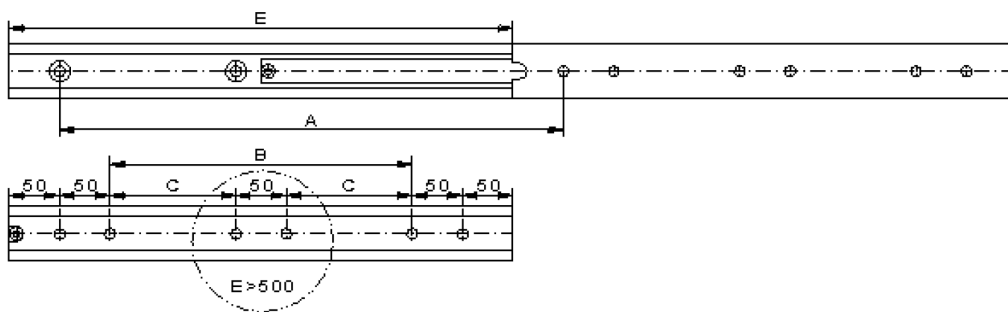
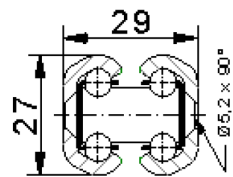
telescopic slide HGS26

basic type:

- stainless steel
- full extension
- side mounting
- fixing holes

costum-made product:

- special lengths
- holes / hole center distances
- additional mounting elements
- combinations



installation length	length		hole pattern		weight	travel length	load rating per pair
	B	C	1	2			
E			1	2	Kg	A	Kg
200			2	2	0,73	200	56
250	50		4	4	0,92	250	60
300	100		4	4	1,10	300	63
350	150		4	4	1,28	350	67
400	200		4	4	1,47	400	63
450	250		4	4	1,65	450	60
500	300		4	4	1,83	500	56
550		150	6	6	2,00	550	53
600		175	6	6	2,20	600	49
650		200	6	6	2,38	650	45
700		225	6	6	2,57	700	42